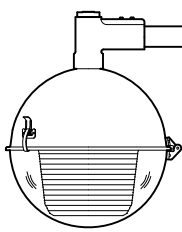


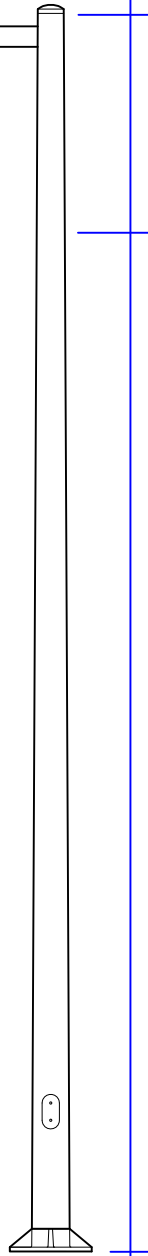
SBB Brooklyn Bridge

Luminaires: Pendant

Luminaire Height: 25"
Diameter: 18"



Spherically sleek is an apt description of this handsome luminaire for park, street, plaza, campus, or walkway. The light output of this luminaire is such that it meets, or, exceeds IES standards for spacing between posts. An optical system, comprising an internal Alzak reflector and prismatic refractor, offers evenly distributed light throughout the circle of illumination.



Structure of high-strength cast aluminum, aluminum spinnings and polycarbonate hemisphere. Hinged refractor door with locking clamps allowing easy access for relamping and maintenance. Available in symmetrical and asymmetrical light distribution.



SBB is designed to utilize a wide range of light sources, including LED, High Intensity Discharge (HID), and others. These light source families provide the highest efficiency in lumen output, service life and energy use.

For Ordering Information see reverse.



Shown with
Pole: SAL-4R3-12'-BB-18"

Sentry
ELECTRIC

SBB Brooklyn Bridge

Sentry Electric LLC

185 Buffalo Avenue, Freeport, New York, 11520

Telephone: 516.379.4660 Fax: 516.378.0624

www.sentrylighting.com

info@sentrylighting.com

SBB Brooklyn Bridge

Luminaires: Pendant

Product Features

Construction

All components including slip fitter, ballast mount and refractor door are made of high-strength ASTM 356.1 cast aluminum and heavy gauge aluminum spinings. Refractor door shall have a detachable hinge with (2) locking clamps allowing easy access for relamping and fixture maintenance.

Optical

Outer hemisphere 1/8" vacuum formed clear polycarbonate. Internal prismatic refractor with symmetrical or asymmetrical light distribution. Reflector to be made of ALZAK® aluminum with a specular finish.

Available in a wide range of lamp choices and wattage ratings including High Intensity Discharge (HID) and Incandescent.

Electrical

Meets UL 1598 for Safety. Luminaire shall have porcelain socket rated for 600V with 4kV pulse and uses a nickel-plated screw shell with spring-loaded center contact and lamp grips. Luminaires shall be prewired and factory tested. The ballast shall be a high power factor, constant wattage autotransformer type. The power factor shall be at least 90%.

Finish

To insure product durability, all exposed metallic surfaces shall be finished with a high performance coating consisting of high gloss Super Durable polyester powder coat paint to be applied utilizing a multi stage process that includes phosphate pretreatment, electrostatic powder application, and convection curing. Paint shall be weather, corrosion, abrasion, and UV resistant in compliance with the American Architectural Manufacturers Association's specification AAMA 2604-05. Color to be specified.

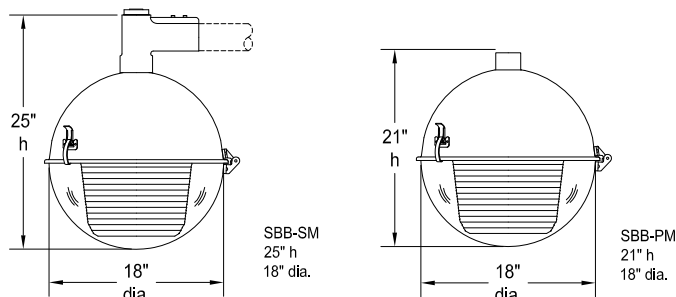
Mounting

Side mounts using a cast aluminum slip fitter which accepts pipe up to a Ø2 1/2" and has a 4" fitter depth. Two (2) 3/8"-16 UNC stainless steel allen head cup point set screws secure luminaire to mounting arm.

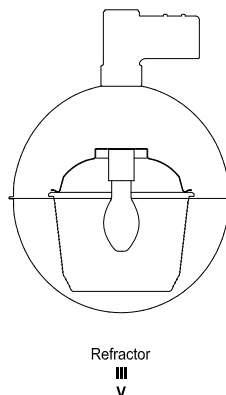
Pendant mounts to a 1-1/4" NPS pipe. One (1) 3/8"-16 UNC stainless steel allen head cup point set screw secures luminaire to mounting pipe. Optional PLZH Plumbizer ensures luminaire installs plumb.

All mounting hardware shall be stainless steel.

Model



Optical System



Ordering Information

Choose the **boldface** catalog references that best suit your needs.

Example: **SBB - SM - 100MHPS - 120V - MED - PC - V - TLR - RPC - BK**

Model	Mounting	Wattage/ Lamp	Voltage	Lamp Socket	Distribution	Options	Finish
SBB	PM Pendant Mount	INC Incandescent	Single Line	(blank) Mogul Socket	III Refractor, Type III V Refractor, Type V	HSS House Side Shield TLR Twist Lock Receptacle (Standard on SM only) CT Closed Top (SM only) PLZH Plumbizer (PLZH requires PLZC option on mating arm or bracket; for pendant mount only)	BK Black (Standard) BZ Bronze FG Federal Green GR Gray Consult factory for custom finish.
		50HPS 50 watt High Pressure Sodium	120V	MED Medium Socket			
	SM Side Mount	70HPS 70 watt High Pressure Sodium	480V	Mogul socket unless specified otherwise.	Refractor Material	Accessories	
		100HPS 100 watt High Pressure Sodium	Multi-Tap	Mogul socket unless specified otherwise.			
		150HPS 150 watt High Pressure Sodium	120V-MT		(blank) Acrylic GL Borosilicate Glass PC Polycarbonate	RPC Receptacle Photo Control (SM only)	
		50MHPS 50 watt Metal Halide, Pulse Start	208V-MT				
		70MHPS 70 watt Metal Halide, Pulse Start	240V-MT				
		100MHPS 100 watt Metal Halide, Pulse Start	277V-MT				
		150MHPS 150 watt Metal Halide, Pulse Start					
		175MHPS 175 watt Metal Halide, Pulse Start					
		Consult factory for LED configurations and other lamping options.					